

Pointing Mortar for inside and outside

Composition:

corresponds to DIN 1053 MG 3 EN 998-2 M10; standardized binders (cement according to EN 197-1) and additives; aggregates according to EN 13139 (aggregate for mortar). Areas of application: For subsequent grouting indoors and outdoors for facade bricks, facing bricks, concrete blocks, field stones, etc.

Product features:

breathable, frost-proof, weatherproof

Processing:

Mix 15 kg of CK-Pointing mortar with the addition of approx. 1,2-1,8l of water so that it is earth-moist to malleable. The area to be worked on must be pre-wetted thoroughly. The grouting must be done in 2 work steps:

1. First butt joint than horizontal joint, 2. First horizontal than butt joint

With air and object temperatures below 5° and above 25°C as well as rain, the material may not be processed.

Material consumption:

approx. 6-8kg/m² depending on the joint width and depth

Aftercare:

The fresh grouting must be protected from frost, draught and direct sunlight. Also protect from driving rain in the first days.

General information:

The requirements of DIN 988-2 and DIN 18580 must be observed.

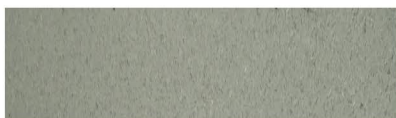
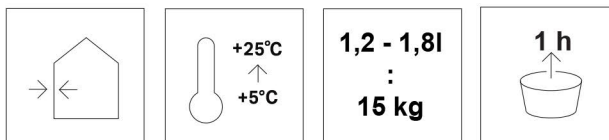
The technical data and information refer to + 20 ° C and 50% relative humidity (lower temperatures lengthen, higher temperatures shorten the specified values). Grout contains cement and therefore has an alkaline reaction when wet.

Protect skin and eyes, rinse thoroughly with water in case of contact, if necessary consult a doctor.

Storage:

Weatherproof, cool and dry on wooden grate, close opened containers immediately. Shelf life: 12 months from date of manufacture

Klinkerwerk Küsters GmbH & Co. KG
Steinstr. 45
D - 47533 Kleve-Kellen



CK-FM7 Light gray 15 kg

		Gefahr Danger	Klinkerwerk Küsters GmbH & Co. KG Steinstr. 45 D - 47533 Kleve-Kellen
<p>Hazard and precautionary information: H315: Causes skin irritation. H318: Causes serious eye damage. H335: May cause respiratory irritation. P232: Protect from moisture. P260: Do not breathe dust. P280: Wear protective gloves/eyewear/clothing. P305+P351+P338: If in eyes: Rinse cautiously with water for several minutes. Remove contact lenses, if present and easy to do. Continue rinsing. P310: Immediately call Poison Center. P302+P335+P352: If on skin: Brush of loose particles from skin. Wash with plenty of water. P333+ P313: If skin irritation or rash occurs: Get medical advice. P501: Container to communal collection. Contains cement. Giscode ZP1: Cement-containing products. Further information: www.wingins-online.de</p>			

0790	
Number of the declaration of performance and unique identification code of the product type:	1000/1
Number of certificate	0790-CPR-1.3221.3845-11
Fire behaviour to EN 13501-Compressive strength (28 d) nach EN 12808-Initial shear strength (Adhesive shear strength) to DIN EN 1052-Chloride content nach EN 1015-17-Capillary water absorption to EN 1015-Water vapor permeability Thermal conductivity	A1 M10 ≥ 0,15 N/mm ² ≤ 0,1 M.-% 0,40 kg/(m ² x min 0,5) 15/35 (Table value) ≤ 0,82 W/(m*k) für P=50% (Table value) ≤ 0,89 W/(m*k) für P=90% (Table value)
Λ 10, dry	
Durability	Suitable for inside and outside, frost-resistant
Dangerous substances	NPD

6GY0-U0SY-300Y-NSTJ



4002623080359